

Violoncelle et Contrebasse

# 8 pièces

## 1. Sarabande de la sixième Suite pour Violoncelle seul

BWV 1012

J.S.Bach

Largo  $\text{♩} = 54$

*mp*

*p*

*mf*

*p*

*cresc.* *pp*

*cresc.* *mf*

*rall.*

2. Choral "Ardemment j'aspire à une fin heureuse" BWV 727

2

$\text{♩} = 76$

Musical score for Choral "Ardemment j'aspire à une fin heureuse" BWV 727. The score is written in bass clef with a key signature of one sharp (F#) and a common time signature (C). It consists of four staves of music. The first staff begins with a dynamic marking of *p*. The music features a mix of eighth and sixteenth notes, with some measures containing slurs and accents. The piece concludes with a double bar line.

3. Choral "Quand nous sommes dans l'extrême détresse" BWV 640

Largo  $\text{♩} = 50$

Musical score for Choral "Quand nous sommes dans l'extrême détresse" BWV 640. The score is written in bass clef with a key signature of one sharp (F#) and a common time signature (C). It consists of three staves of music. The first staff begins with a dynamic marking of *p*. The music is characterized by a slower tempo (Largo) and features a mix of eighth and sixteenth notes, with some measures containing slurs and accents. The piece concludes with a double bar line.

4. Aria de la suite en Ré BWV 1068

Largo ♩=60  
Violoncelle arco  
Cb. pizz

*pp*

1. (arco) 2.

(Cb. pizz)  
*pp*

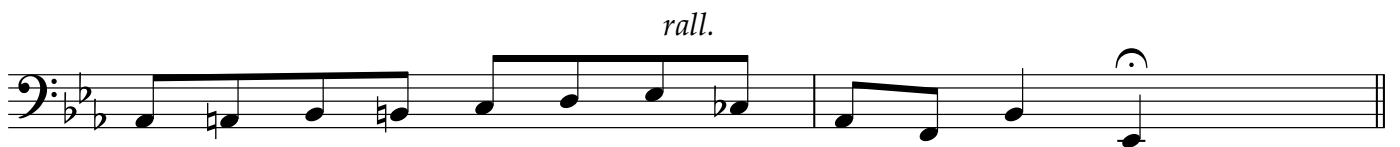
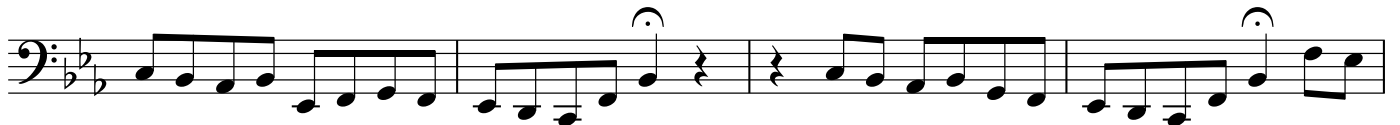
*p* *crescendo*

(arco)

5. Choral "Ô homme pleure sur tes lourds péchés" BWV 622

4

Adagio assai ♩=50



6.Choral:"Viens maintenant sauveur des païens" BWV 659

♩=66

The image displays a page of musical notation for a chorale. It consists of nine staves of music, all in bass clef. The key signature is one sharp (F#), and the time signature is common time (C). The tempo is indicated as ♩=66. The music is characterized by a consistent eighth-note accompaniment. The first staff begins with a melodic line that includes a trill-like ornament. The second staff continues with a similar melodic pattern. The third staff features a melodic line with a trill-like ornament. The fourth staff continues the melodic pattern. The fifth staff features a melodic line with a trill-like ornament. The sixth staff begins with a melodic line that includes a trill-like ornament. The seventh staff continues with a similar melodic pattern. The eighth staff features a melodic line with a trill-like ornament. The ninth staff concludes the page with a melodic line that includes a trill-like ornament.

7. Adagio BWV 564

6

♩=60

*p*

*rall.*

Detailed description: This block contains the first ten measures of the Adagio BWV 564. It is written in bass clef with a common time signature (C). The tempo is marked as ♩=60. The first measure starts with a piano (*p*) dynamic. The music consists of a single melodic line with various rhythmic patterns, including eighth and sixteenth notes, and rests. The key signature has one sharp (F#). The piece concludes with a *rall.* (ritardando) marking and a fermata over the final note.

♩=66

8. Choral "Seigneur Jésus je t'appelle" BWV 639

1.

2.

Detailed description: This block contains the first four measures of the Choral "Seigneur Jésus je t'appelle" BWV 639. It is written in bass clef with a common time signature (C). The tempo is marked as ♩=66. The key signature has three flats (B-flat, E-flat, A-flat). The music features a single melodic line with various rhythmic patterns, including eighth and sixteenth notes, and rests. The piece includes first and second endings, indicated by "1." and "2." above the notes. The first ending leads to a repeat sign, and the second ending leads to the final note.