

SONATA opus 2 No.8

Alto

G.F.Handel
(1685-1759)

Andante ♩ = 80
sourdines

6

11

16

21

24

28

33

p *sempre* *mf*

p

p *pp* *mf*

p

p

p

mf *p*

p *morendo*

Allegro $\text{♩}=72$
ôtez sourdines

II

Alto

1 *f*

5 *p*

9 *mf f*

13 *p*

17

21 *p f*

25 *mf*

29 *p*

Alto

34

f

39

p

44

f

49

mf *p*

54

p *p*

59

f

64

p *f*

68

Largo $\text{♩}=72$
sourdines

III

Alto

1

5

9

13

17

22

28

IV

Alto

5

Allegro ♩=144
ôtez sourdines

1 *f*

8 *p*

15 *mf*

23

31 *p*

39 *f*

47 *f*

53 *f*

59 *f*

63 *V*

67 *p* *V*

71 *V*

75 *mf*

80 *f*

84

88 *f* *p*

92

96

Detailed description: This page of a musical score for Alto is in 3/8 time and G major. It contains ten staves of music. The first staff (measures 59-62) features a series of dotted quarter notes, starting with a dynamic of *f*. The second staff (measures 63-66) includes a slur over a quarter-note sequence and a *V* marking. The third staff (measures 67-70) shows a *p* dynamic and a *V* marking. The fourth staff (measures 71-74) has two *V* markings. The fifth staff (measures 75-79) is marked *mf* and features a crescendo hairpin. The sixth staff (measures 80-83) is marked *f* and also features a crescendo hairpin. The seventh staff (measures 84-87) has a *f* dynamic. The eighth staff (measures 88-91) has a *p* dynamic. The ninth staff (measures 92-95) continues the melodic line. The tenth staff (measures 96-99) features a long slur over a sequence of notes.

Alto

100



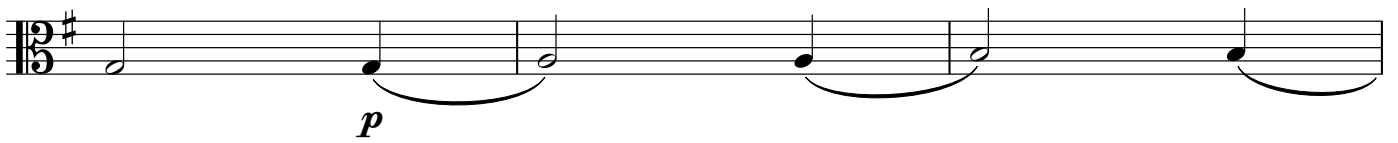
103



107



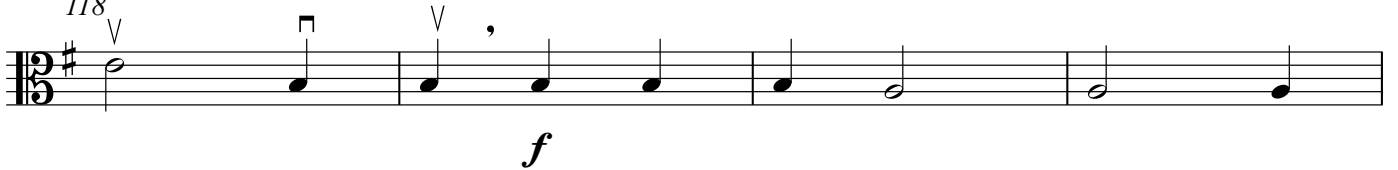
111



114



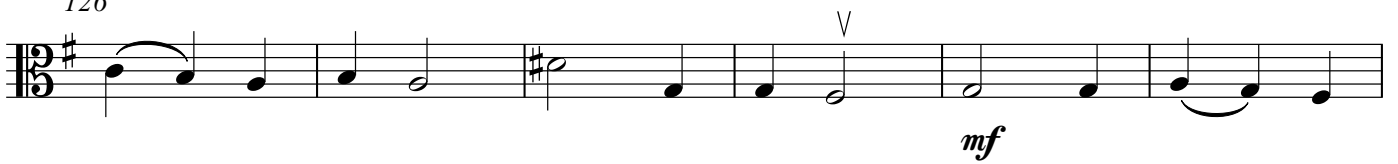
118



122



126



132



137

rall.

