

Contrebasse solo

A. Vivaldi

Concerto en Re

Transcription et arrangement Bernard Salles

Contrebasse solo

Concerto en Re

I

A.Vivaldi

Transcription et arrangement Bernard Salles

Allegro

First measure of the piece in bass clef, C-clef. It begins with a forte (*f*) dynamic and features several accents (*V*) over the notes.

f

Measures 4, 5, and 6 in bass clef. Measure 4 starts with a forte (*f*) dynamic. Measures 5 and 6 continue with a forte (*f*) dynamic and include accents (*V*) over the notes.

Measures 7, 8, and 9 in bass clef. Measure 7 starts with a piano (*p*) dynamic, measure 8 with a forte (*f*) dynamic, and measure 9 with a piano (*p*) dynamic. Accents (*V*) are present over the notes.

p

f

p

Measures 10, 11, and 12 in treble clef. Measure 10 starts with a mezzo-forte (*mf*) dynamic. Measure 11 includes an accent (*V*) and a square symbol (\square). Measure 12 continues with a mezzo-forte (*mf*) dynamic.

mf

Measures 13 and 14 in treble clef. Both measures are marked with a forte (*f*) dynamic.

Measures 15, 16, and 17 in treble clef. All three measures are marked with a forte (*f*) dynamic.

f

Measures 18 and 19 in treble clef. Both measures are marked with a piano (*p*) dynamic.

p

Measures 20, 21, and 22 in treble clef. The dynamic is marked as *cresc.* (crescendo).

cresc.

Measures 23, 24, and 25 in treble clef. Measure 23 is marked *f*, measure 24 is marked *p*, and measure 25 is marked *f*.

f

p

f

Contrebasse solo

II

4 **Larghetto** ♩=54

4 *mp*

3

5 *mp*

7

9 *mp*

11 *cresc.*

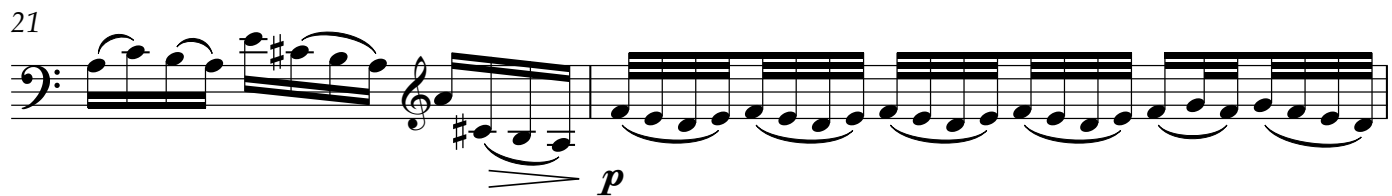
13

15 *p* *cresc.*

17 *p*

Contrebasse solo

19 

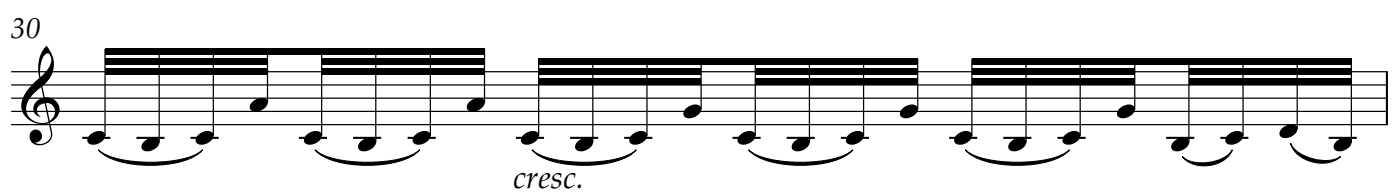
21 

23 

25 

27 

29 

30 

31 

33 

Contrebasse solo

III

6

Allegro

p

f *mf*

mf *p*

f *mf*

f *mf*

p *mf*

mf *f*

f *mf*

p *mf*

Contrebasse solo

59



63



cresc. poco a poco

66



mf

70



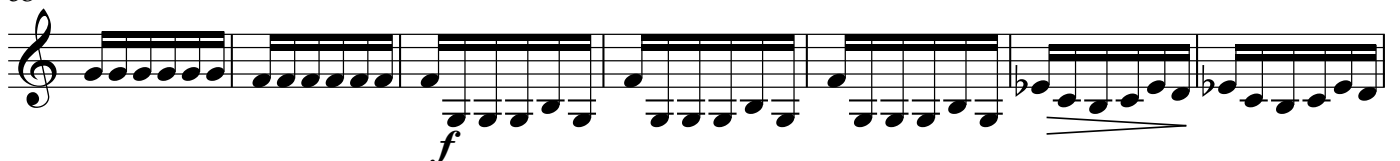
p

76



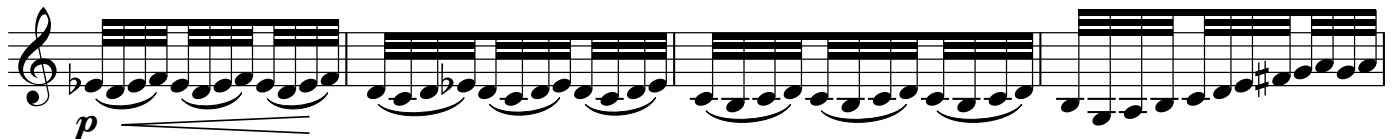
f

83



f

90



p

94



f

99



p

f